

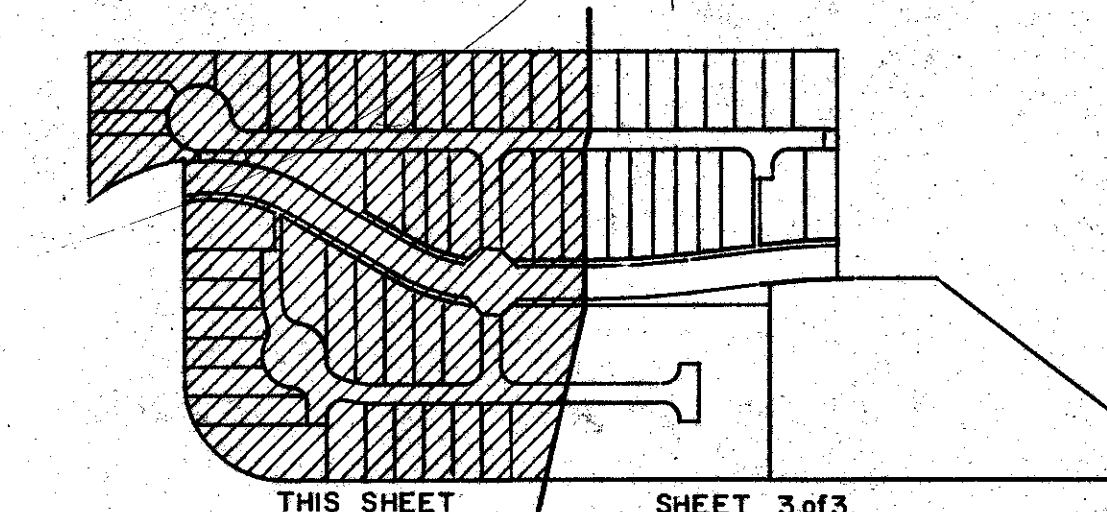
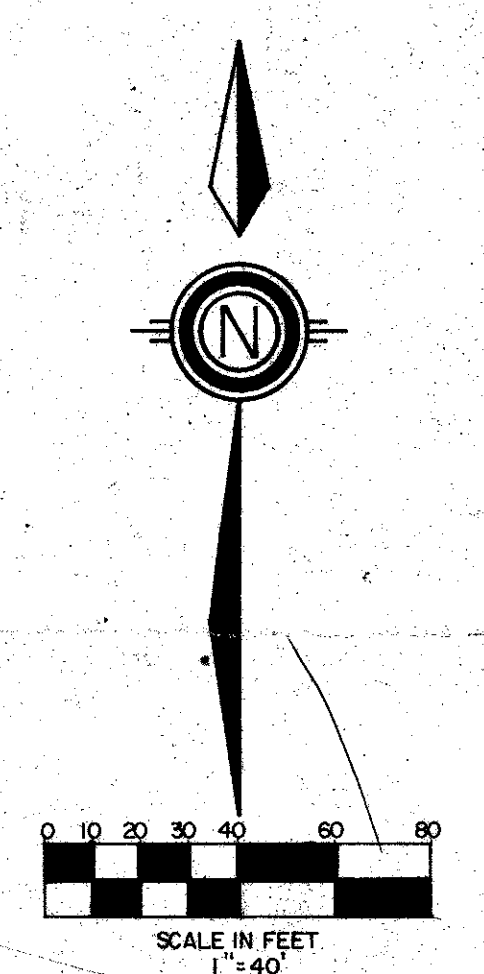
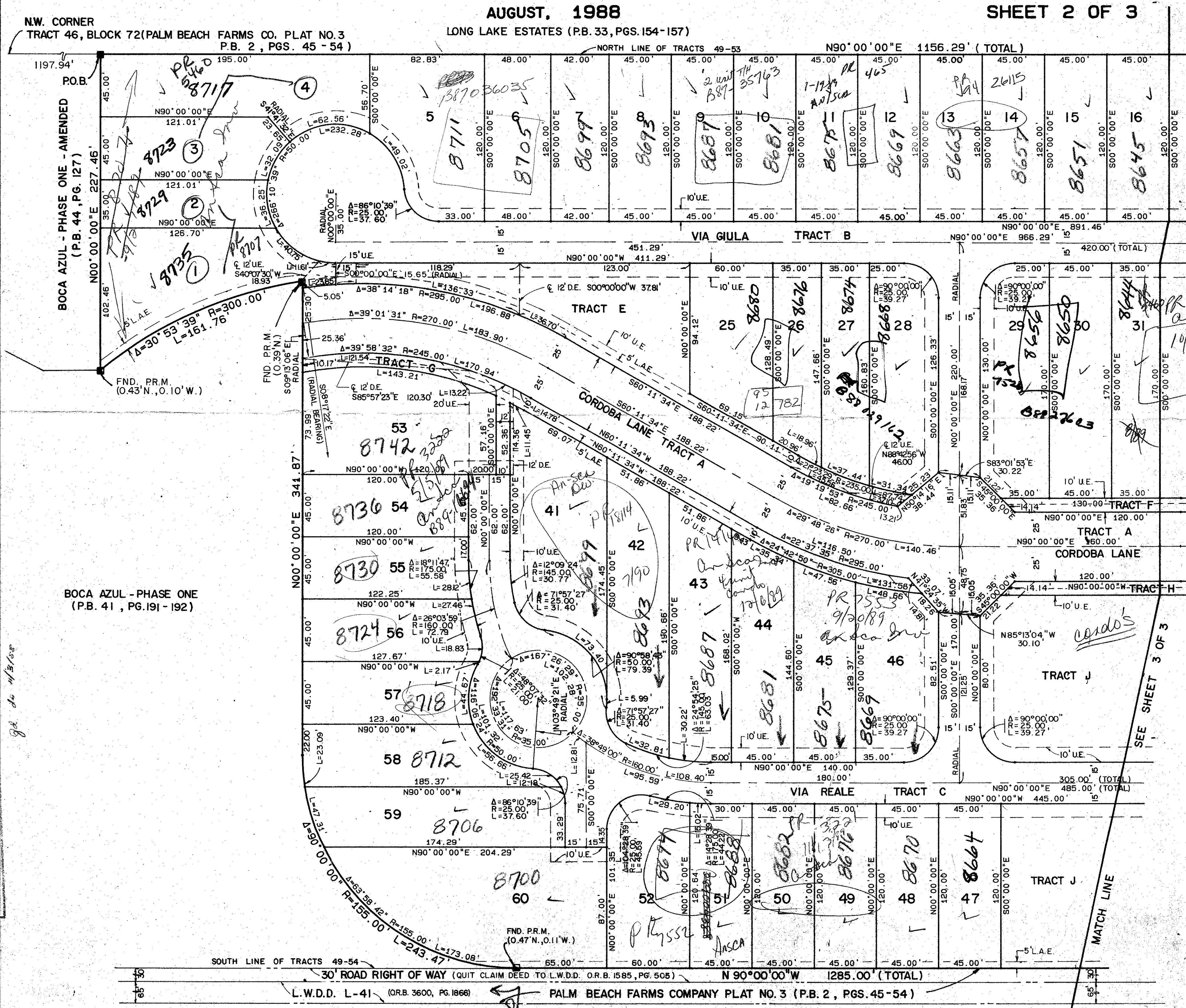
# BOCA AZUL - PHASE TWO

A REPLAT OF TRACTS 51 AND 52, AND P/O TRACTS 49, 50, 53, AND 54 OF BLOCK 72, PALM BEACH FARMS COMPANY PLAT NO. 3, (P.B.2, PG.45-54) SITUATE IN SECTION 5, TOWNSHIP 47 SOUTH, RANGE 42 EAST PALM BEACH COUNTY, FLORIDA

AUGUST, 1988

SHEET 2 OF 3

STATE OF FLORIDA  
COUNTY OF PALM BEACH  
THIS PLAT WAS FILED FOR  
RECORD \_\_\_\_\_ DAY OF \_\_\_\_\_  
AD. 1988 AND DULY RECORDED  
IN PLAT BOOK \_\_\_\_\_ ON PAGES  
\_\_\_\_\_ AND \_\_\_\_\_  
BY: JOHN B. DUNKLE, CLERK  
D.C.



SHEET INDEX MAP  
1" = 300'

60/158  
0203-001

**STANLEY WANTMAN, INC.**  
2000 LOMBARD STREET, WEST PALM BEACH, FL 33407 (305) 642-7444

DRAWN	D.M.W.	DATE	Feb. 1988
CHECKED	W.B.H.	SCALE	1" = 40'
DRAWING NO.	09513PL2		

BOCA AZUL - PHASE TWO

SUBDIVISION: Boca Azul  
BOOK: 60  
PAGE: 158  
FILED: 8/11/88  
BY: J.B. DUNKLE  
CLERK

TAZ 768  
J.B. DUNKLE

SEE SHEET 3 OF 3

WHISPER WALK (P.B. 43, PGS. 189-191)